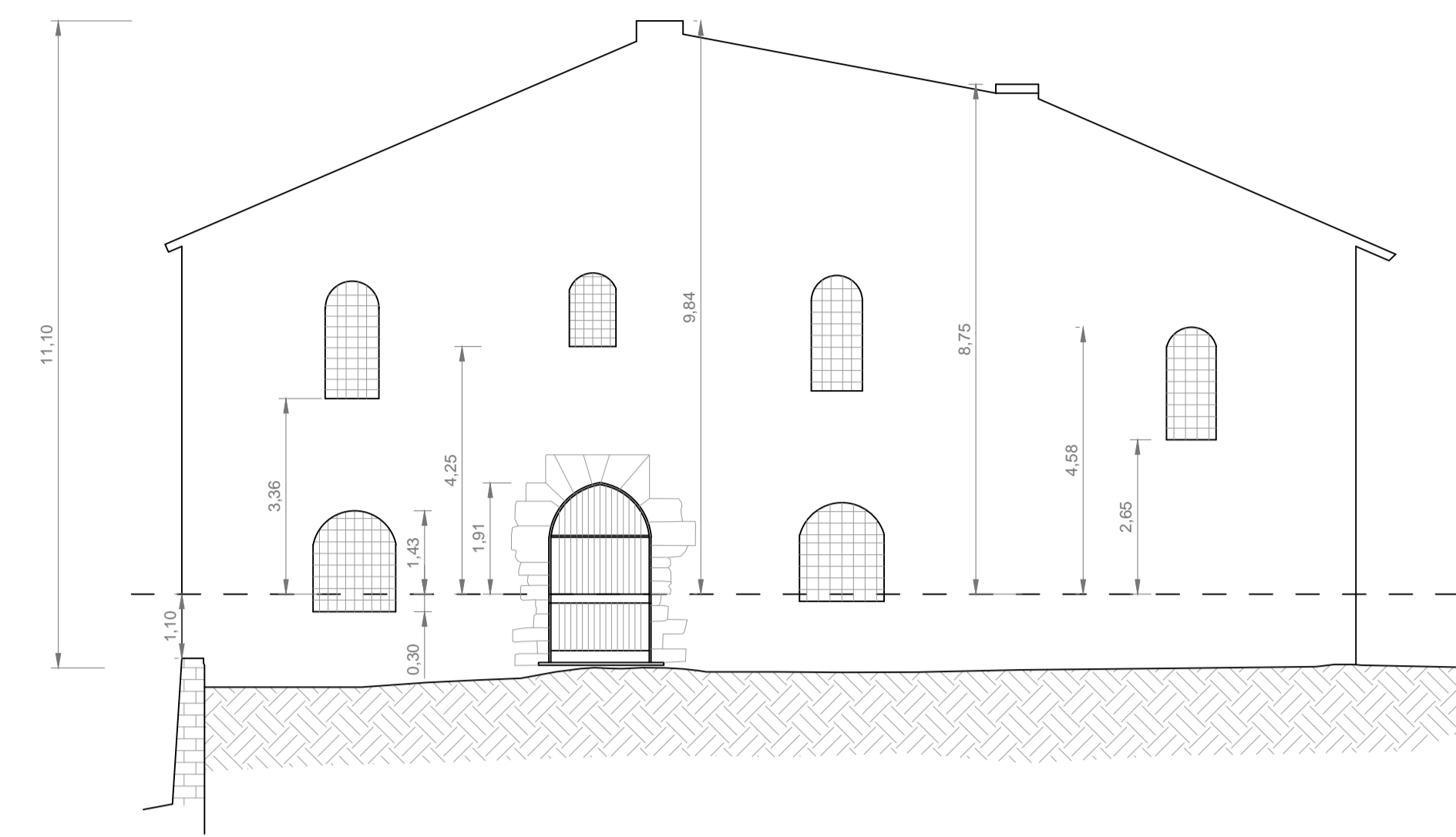
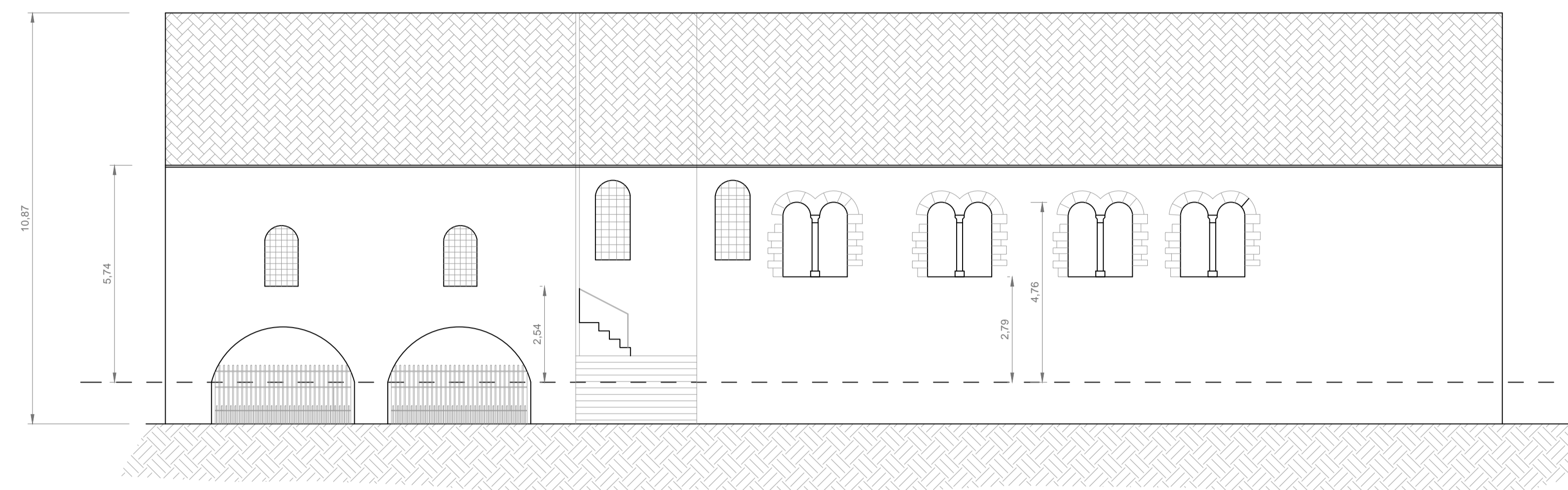


PROSPETTO FRONTALE SCALA 1:100



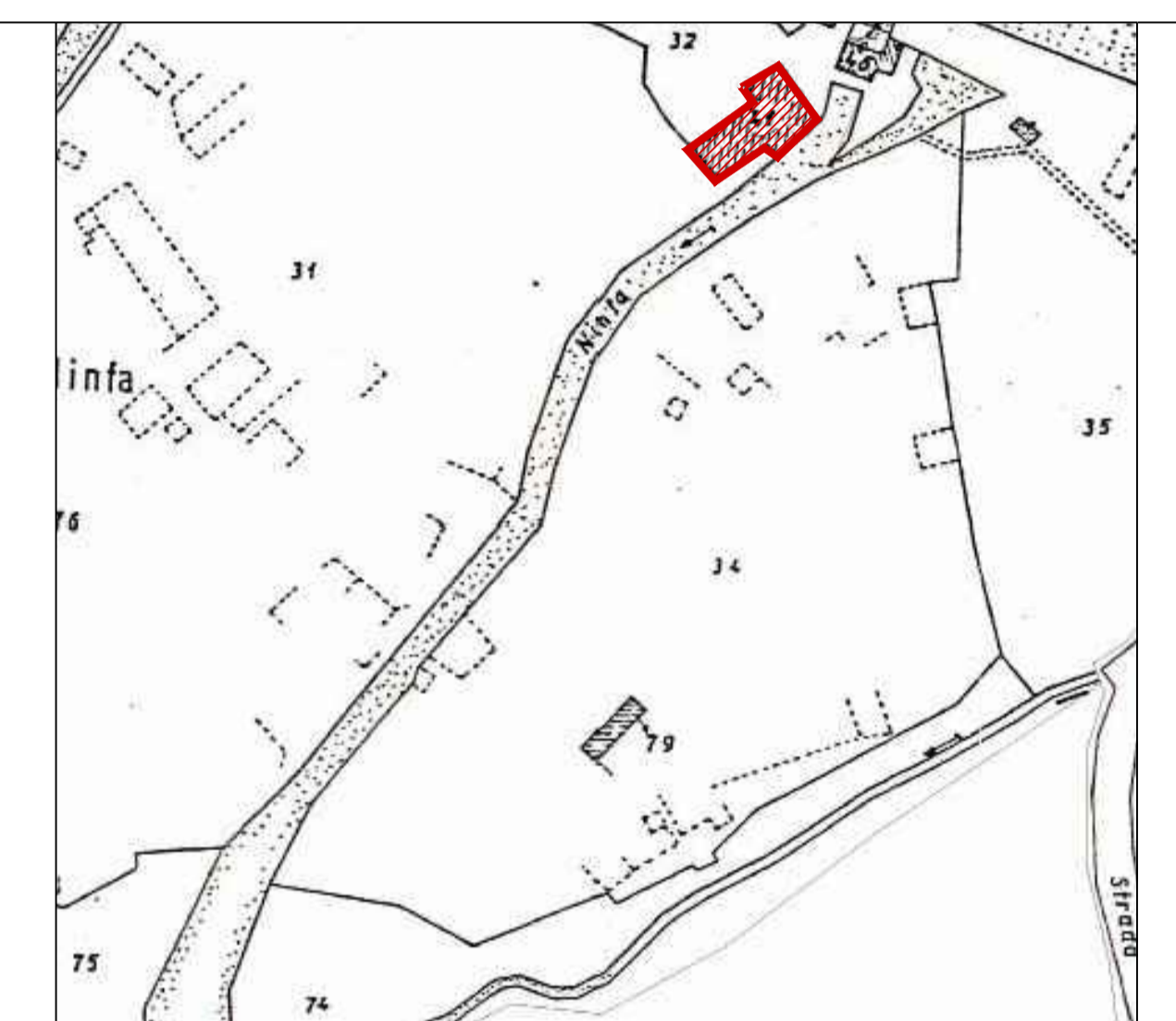
PROSPETTO LATERALE SCALA 1:100



Sviluppo planimetrico - stralcio cartografia di base (isp. 1:1000)



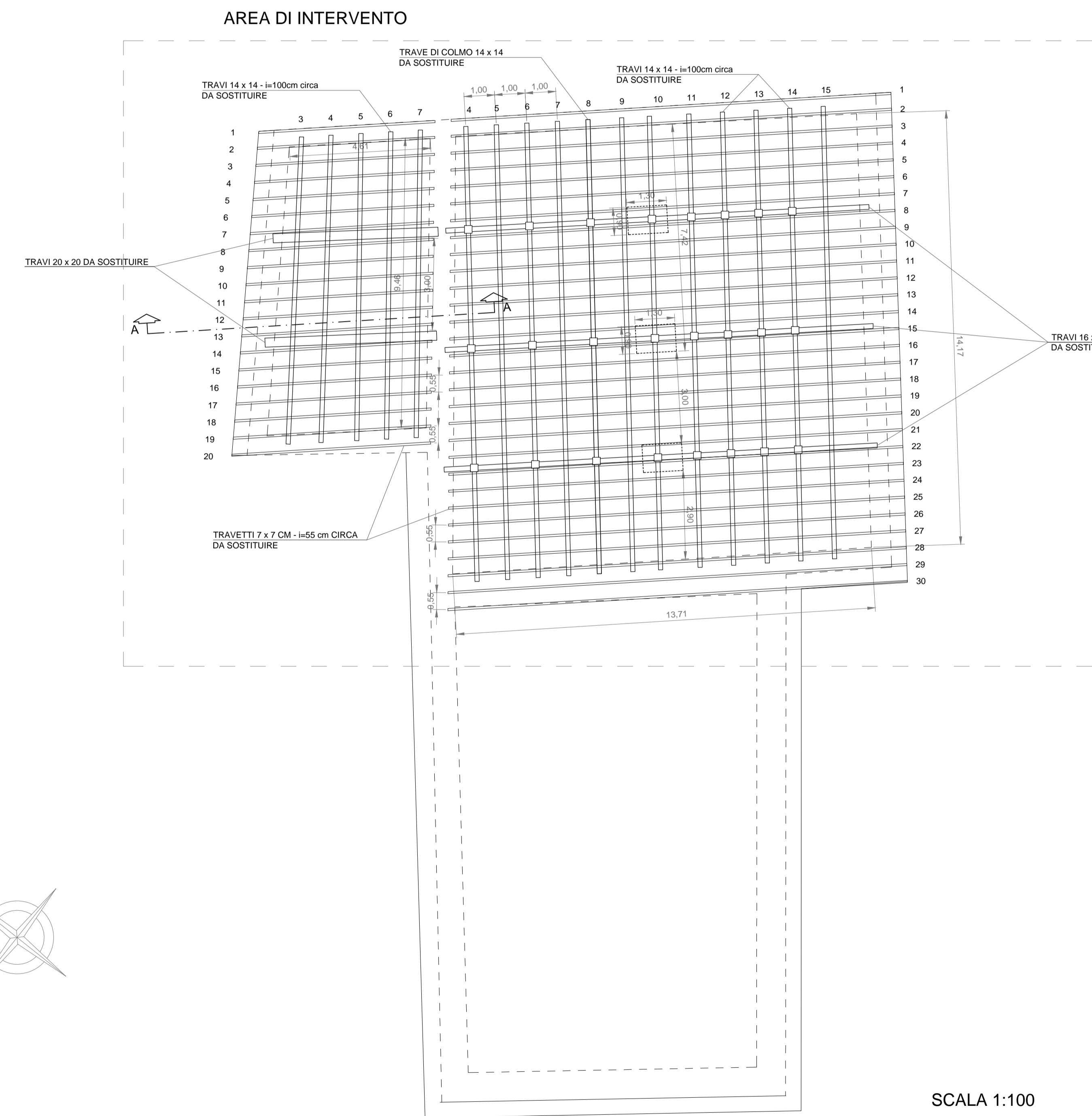
CATASTO COMUNE DI CISTERNA DI LATINA - foglio catastrale n°26 (mappale n°41, particella 32) , scala 1:2.000



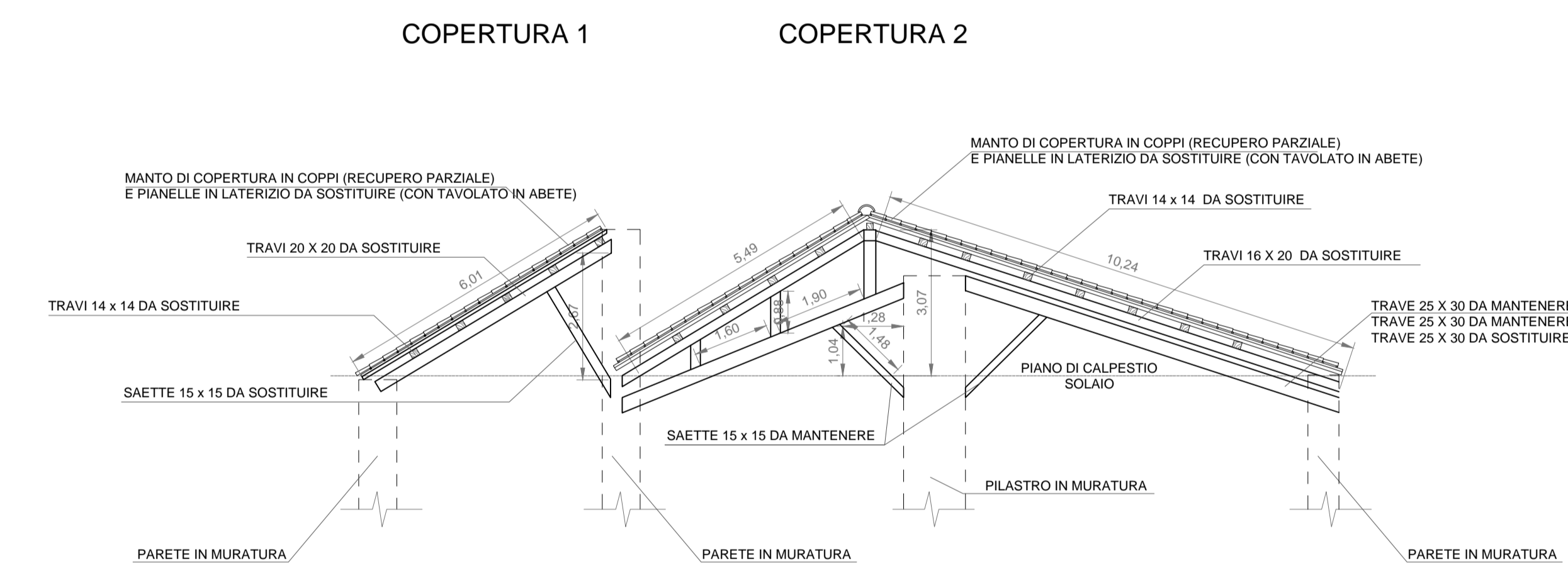
PIANTA DELLE COPERTURE ANTE OPERAM



PIANTA DEL SOTTOTETTO ANTE OPERAM



SEZIONE TRASVERSALE A - A' ANTE OPERAM



SCALA 1:100

